



DCMA

Accessing Predefined Reports, Cubes, and Ad Hoc

Presented By:

Jennifer Hancock

April 2010

Course Topics

Note: Links *only* work in PowerPoint's slide show view.

Module

Accessing Predefined Reports, Cubes, and Ad Hoc

Lesson One

Accessing Predefined Reports, Cubes, and Ad Hoc

- Topic One
- Topic Two
- Topic Three
- Topic Four

- [Accessing Reports](#)
- [Viewing Predefined Reports](#)
- [Viewing Cubes](#)
- [Viewing Ad Hoc](#)

At the end of this training you should be able to:

- Access the eTools reporting package page
- Access a specific reporting package
- Access and view predefined reports for the reporting package
- Access and view cubes for the reporting package
- Access, view, and create new ad hoc queries

Module

Accessing Predefined Reports, Cubes, and Ad Hoc





Module - Accessing Predefined Reports, Cubes, and Ad Hoc

DEFENSE CONTRACT MANAGEMENT AGENCY

Module Lessons

Lesson One Accessing Predefined Reports, Cubes, and Ad Hoc



Lesson One

Accessing Predefined Reports, Cubes, and Ad Hoc

Lesson One Topics

Topic One Accessing Reports

Topic Two Viewing Predefined Reports

Topic Three Viewing Cubes

Topic Four Viewing Ad Hoc

DCMA Topic One - Accessing Reports

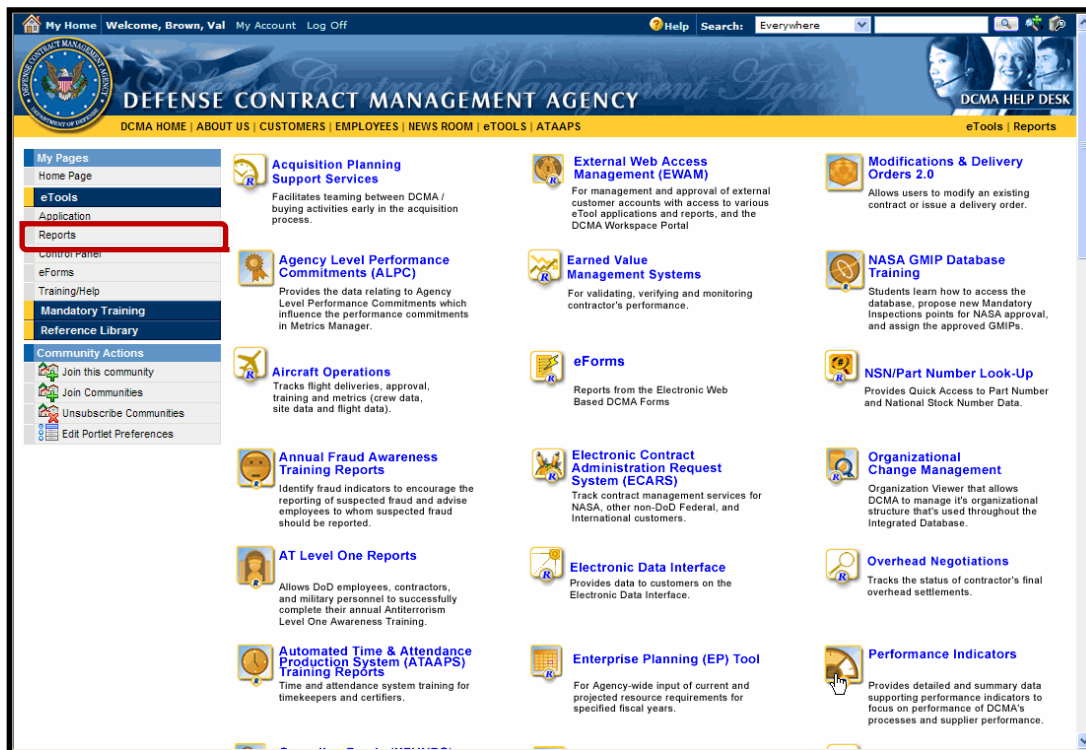
DEFENSE CONTRACT MANAGEMENT AGENCY

Accessing Reports

When you log into the portal and select eTools from the menu bar, the eTools Applications page displays by default.

The eTools Reports appear on a separate page in the portal.

Accessing Reports (Graphic 1.1.1.1)	
1	<p>Log into the DCMA portal.</p> <ul style="list-style-type: none"> The eTools Application page displays
2	<p>Click the Reports link in the My Pages section.</p> <ul style="list-style-type: none"> The Reports page displays
3	<p>Click the icon for the report package that you wish to use.</p> <ul style="list-style-type: none"> You might need to scroll down the page to see the icon you need The Reporting Interface page displays



Graphic 1.1.1.1: Accessing Reports

DCMA Topic Two - Viewing Predefined Report

DEFENSE CONTRACT MANAGEMENT AGENCY

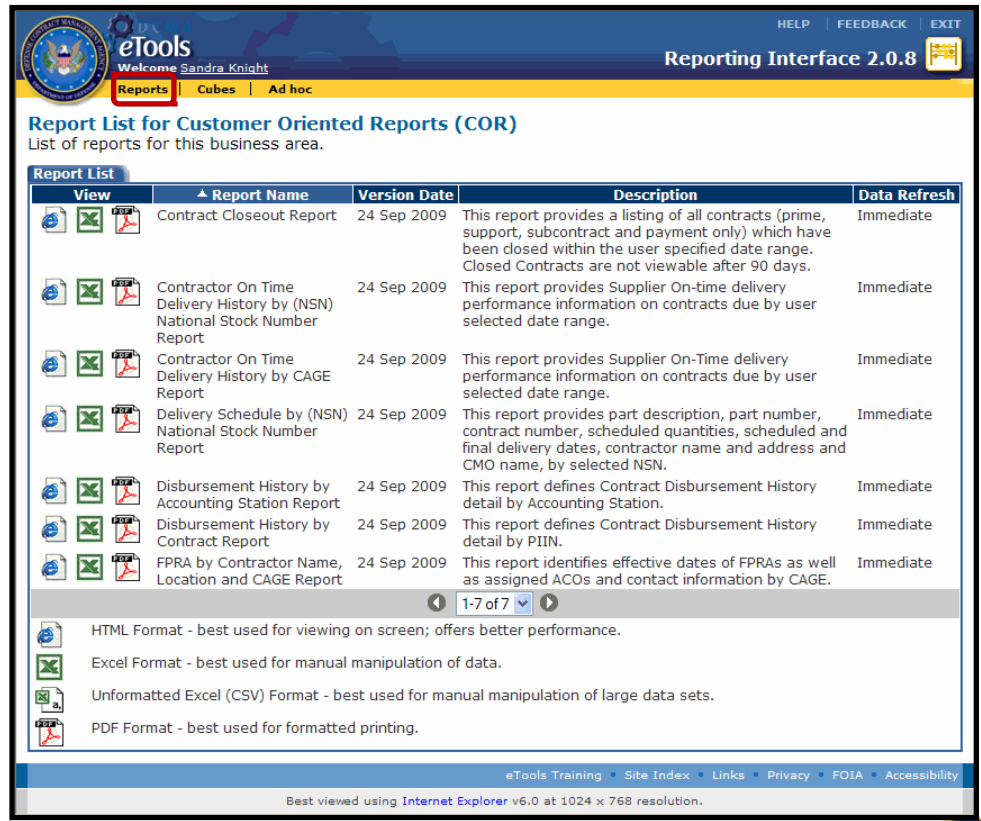
Viewing Predefined Reports

The Reporting Interface page displays the report package's predefined reports, cubes, and ad hoc. It appears when you *click* the **icon** for a report package displayed on the eTools Reports page (Topic One). For more information on running a report, please see the **About Reports** training in the main menu.

Viewing Predefined Reports (Graphic 1.1.2.1)

1. A new browser window appears when you *click* the report package icon (Graphic 1.1.1.1).
 - The Report List page appears by default if there are predefined reports (Graphic 1.1.2.1)
 - Some reports packages do not have predefined reports, so the Cubes List or Ad Hoc display by default
 - If the package does not have cubes or ad hoc, then the menu bar does not display that menu option
 - The View column shows icons for Internet Explorer, Microsoft Excel, and Adobe Acrobat

2. *Click* the icon to select the report and the report output (HTML, Excel, or PDF) that you need.
 - The report prompt page appears and displays prompts where you select information to appear in the report output
 - See the Using Reports training for more information on running reports



Graphic 1.1.2.1: Viewing Predefined Reports



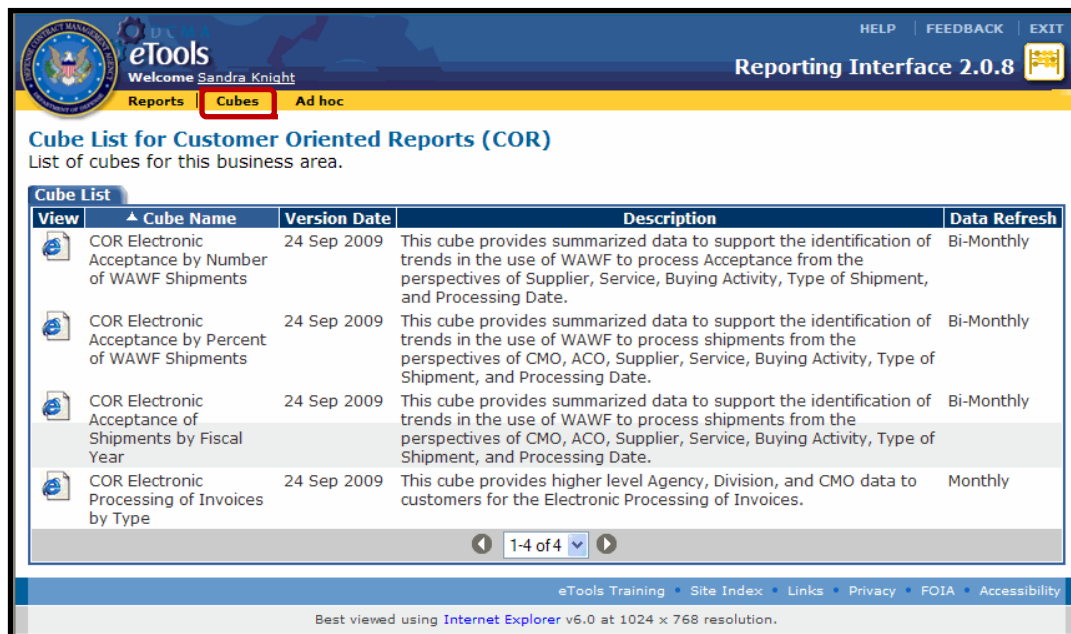
Viewing Cubes





Cubes are available for many but not all reporting packages.

If cubes are available, the menu bar shows a Cubes option. When you *click* the **Cubes** menu option, the Cube List page appears and displays the available cubes.

Viewing Cubes (Graphic 1.1.3.1)

- 1 **Click the Cubes** menu option.
 - The Cube List page appears
 - Some reports packages do not have predefined reports, so the Cubes List or Ad Hoc display by default
 - If the package does not have cubes or ad hoc, then the menu bar does not display that menu option
- 2 **Select the icon** for the cube that you wish to use from the list of cubes displayed.
 - The View column shows only an Internet Explorer icon
 - See the Using Cubes training for more information on using and viewing cubes



View	Cube Name	Version Date	Description	Data Refresh
	COR Electronic Acceptance by Number of WAWF Shipments	24 Sep 2009	This cube provides summarized data to support the identification of trends in the use of WAWF to process Acceptance from the perspectives of Supplier, Service, Buying Activity, Type of Shipment, and Processing Date.	Bi-Monthly
	COR Electronic Acceptance by Percent of WAWF Shipments	24 Sep 2009	This cube provides summarized data to support the identification of trends in the use of WAWF to process shipments from the perspectives of CMO, ACO, Supplier, Service, Buying Activity, Type of Shipment, and Processing Date.	Bi-Monthly
	COR Electronic Acceptance of Shipments by Fiscal Year	24 Sep 2009	This cube provides summarized data to support the identification of trends in the use of WAWF to process shipments from the perspectives of CMO, ACO, Supplier, Service, Buying Activity, Type of Shipment, and Processing Date.	Bi-Monthly
	COR Electronic Processing of Invoices by Type	24 Sep 2009	This cube provides higher level Agency, Division, and CMO data to customers for the Electronic Processing of Invoices.	Monthly

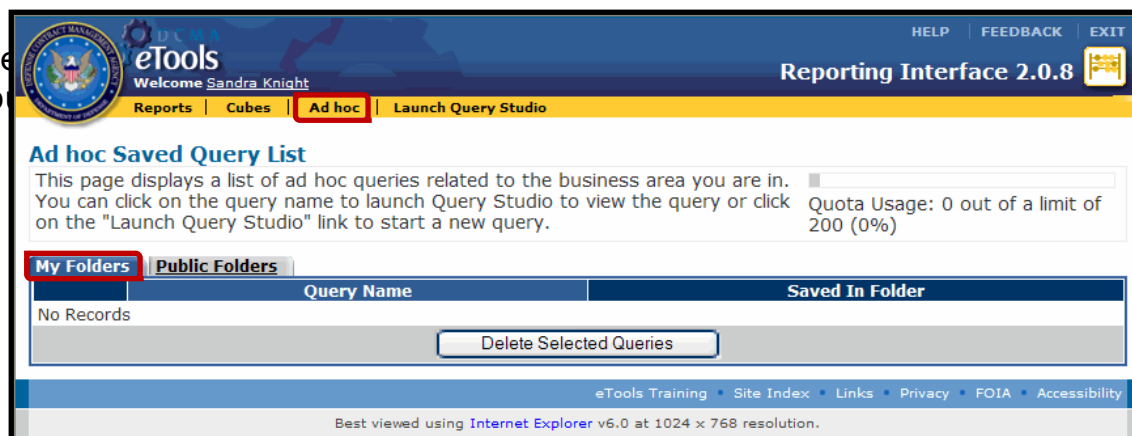
Graphic 1.1.3.1: Viewing Cubes

Viewing Ad Hoc

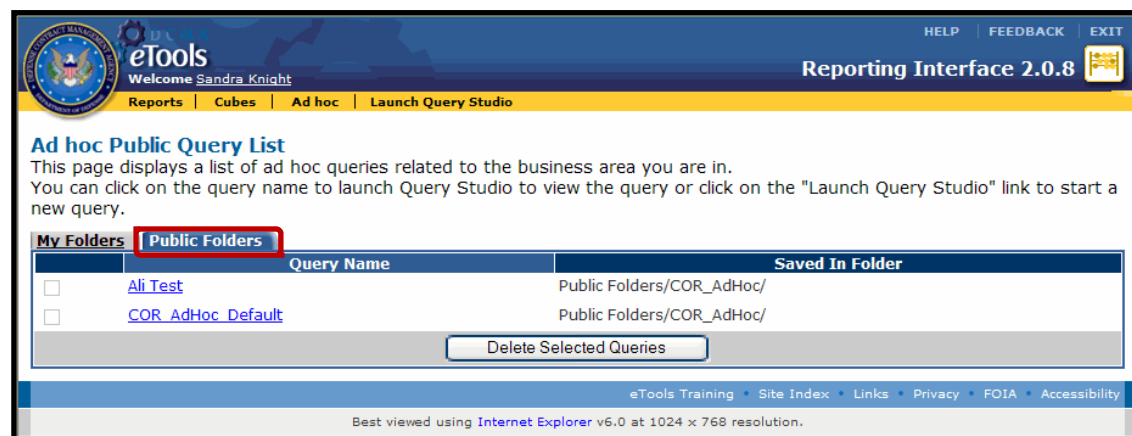
Ad hoc is available for many but not all reporting packages. If ad hoc is available, the menu bar shows an Ad hoc option. When you click the **Ad hoc** menu option, the Ad hoc Saved Query List page appears by default.

Viewing Ad Hoc (Graphic 1.1.4.1 - Graphic 1.1.4.2)

- 1 Click the **Ad hoc** menu option.
 - The Ad hoc Saved Query List page appears
- 2 View the **folders** and **saved queries**.
 - The My Folders tab displays queries that you created and saved for future use.
 - **No Records** displays if you have no saved queries (Graphic 1.1.4.1)
 - Click the **link** on a query name to run the query
- 3 Click the **Public Folders** tab.
 - The Ad Hoc Public Query List appears and displays the Public Folders tab
 - Queries that you or others created and saved display on the Public Folders tab (Graphic 1.1.4.2)



Graphic 1.1.4.1: Ad Hoc Saved Query List, My Folders tab



Graphic 1.1.4.2: Ad Hoc Public Query List, Public Folders tab

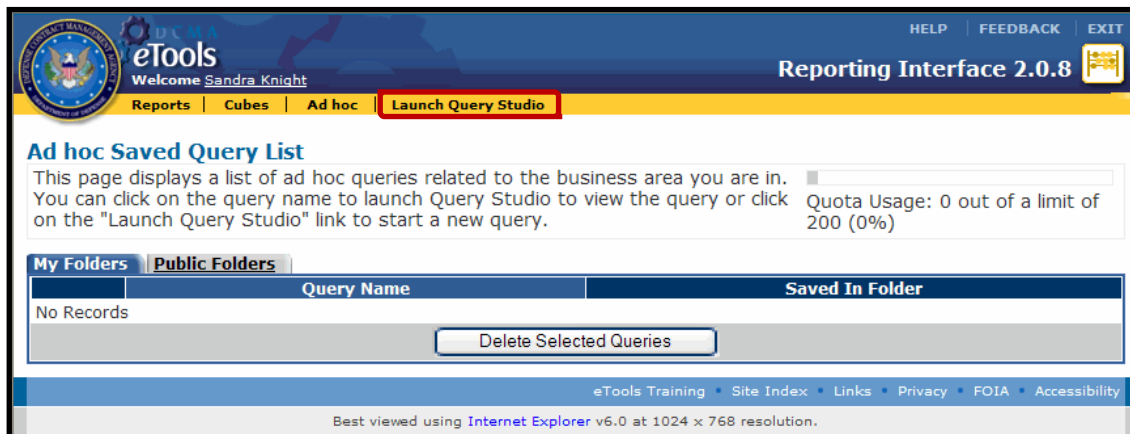
Viewing Ad Hoc

Ad hoc lets you choose an existing query to begin developing a report.

Alternatively, you can create a new query. Click the **Launch Query Studio** menu option.

Viewing Ad Hoc (Graphic 1.1.4.3)

- 1 Click the **Launch Query Studio** menu option.
 - A new browser window appears and displays Query Studio
 - See the Ad hoc training for more information on running an ad hoc report



Graphic 1.1.4.3: Launch Query Studio Menu Option

Lesson One Covered the Following Topics:

Topic One Accessing Reports

Topic Two Viewing Predefined Reports

Topic Three Viewing Cubes

Topic Four Viewing Ad Hoc

Module Covered the Following Topics:

Lesson One Accessing Predefined Reports, Cubes, and Ad Hoc

Now that you have completed this training, you should be able to:

- Access the eTools reporting package page
- Access a specific reporting package
- Access and view predefined reports for the reporting package
- Access and view cubes for the reporting package
- Access, view, and create new ad hoc queries